

**FORM**LITE

LUXURY PORCELAIN  
BENCHTOPS, WHICH DON'T  
COST THE EARTH.



PHONE: 1300 475 514  
WWW.FORMA.COM.AU







With a background in traditional stonemasonry, Forma is looking to the future and pushing the boundaries of innovation.

Never content with the status quo, our team is constantly looking at the horizon, keenly aware of global market trends and innovations.

Bringing together the latest innovations in lightweight Porcelain surfaces, with a global leader in composite substrate materials results in a lightweight, durable and luxurious benchtop surface.

PHONE: 1300 475 514  
WWW.FORMA.COM.AU



# TESTIMONIALS

**Susan Ramsay**  
Dahlia Design & Interiors

---

As an interior designer I thought the finished install from Forma Bendigo was just superb, the veins of the stone had wonderful movement and depth of pattern.

The tones within the different stones were beautiful and worked well with the other elements within the rooms. Even though the patterns were dramatic, they were soft enough to elevate the whole space and not dominate it.

Due to the thin nature of the product it was able to be used as full wall splashbacks too, giving a very expensive look for a cost effective price compared to other products on the market.

**Alice**  
Home Owner

---

Love my new benchtops! So easy to clean, always looks stunning, seems that nothing at all can stain them. (And yes, the kids have already tried out their textas on a nice white section! Gave it a good scrub and it's completely wiped off.)

**Cilla**  
Home Owner

---

Thanks for the benchtops - just loving the luxury looks, without the worry of something scratching it. Nice to know I can rest a hot pan on it without damage too.



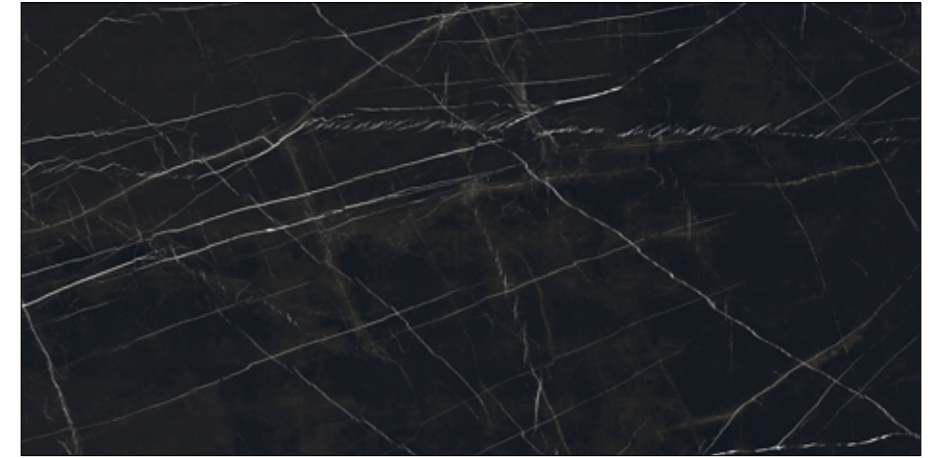
# COLOURS



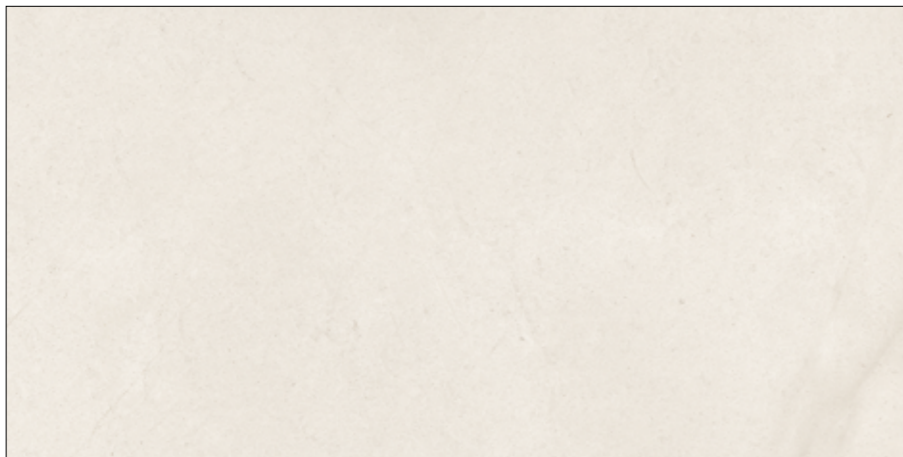
GRASSI WHITE



TORANO STATUARIO



MARQUINA BLACK



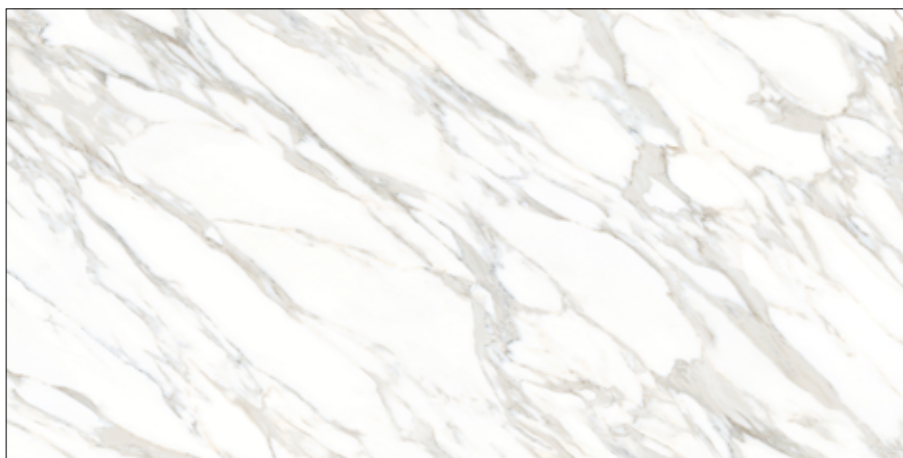
PALOMASTONE LINEN



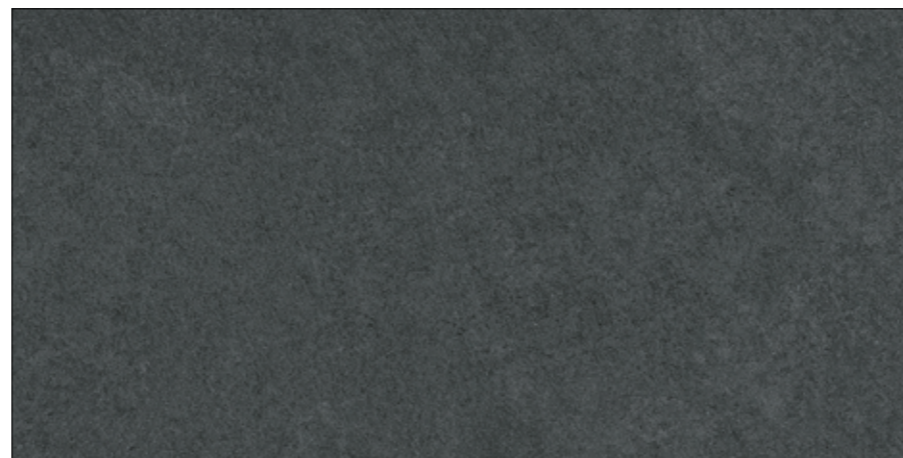
BAHIA SILVER



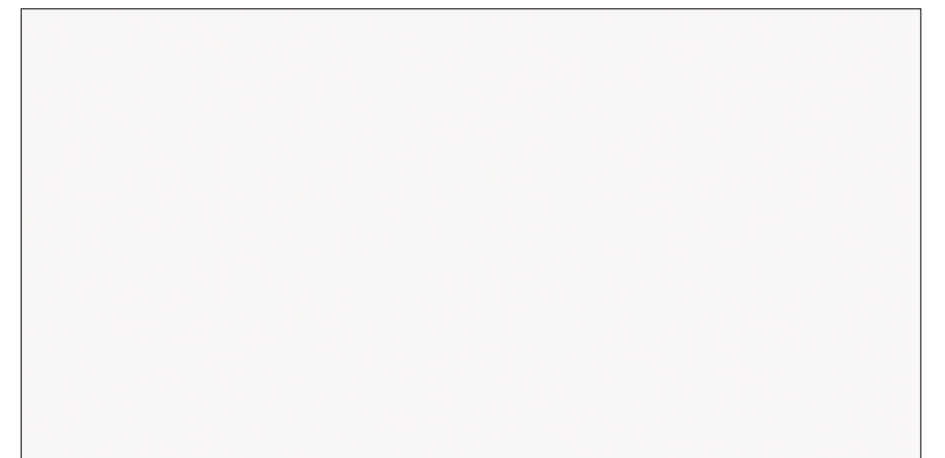
COSMOPOLITO GREY



DUCAL GOLD



IMPERIA BLACK



ALPI WHITE



# SINTERED STONE MEETS COMPOSITE ENGINEERING




## PORCELAIN

Advanced technology, using pressure and temperature, sinters a blend of natural particles to re-create the beauty of natural stone. The result – an ultra compact material, incredibly durable, yet lightweight.

### BENEFITS OF PORCELAIN

 Stain Proof

 Heat Resistant

 UV & Frost Resistant

 Scratch proof

 Hygienic

 Low Silica Content

Mitred edge, with colour matched epoxy glue.

\*As with all porcelain materials, the print is on the surface only, so vein and patterns do not continue through the glue line.

38mm edge thickness

Vein matched aprons

Recycled PET foam substrate, with excellent strength to stiffness ratio.

Green fact: In 2021, our PET Foam supplier recycled 10,405 tons of PET, equivalent to 1,156 MILLION plastic bottles!  
Guaranteed minimum of 50% recycled content, up to 11,880 bottles in each m3!



Bonded to white ply base.





Green fact: In 2021, our PET Foam supplier recycled 10,405 tons of PET, equivalent to 1,156 MILLION plastic bottles!

Guaranteed minimum of 50% recycled content, up to 11,880 bottles in each m3!